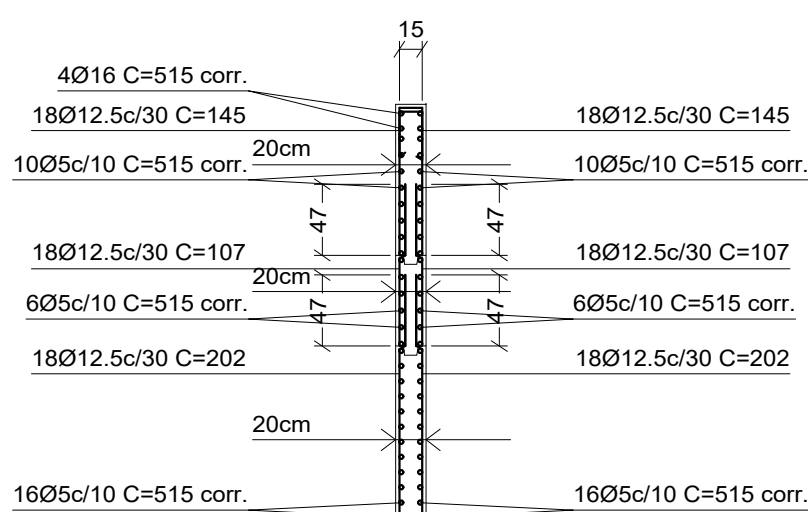
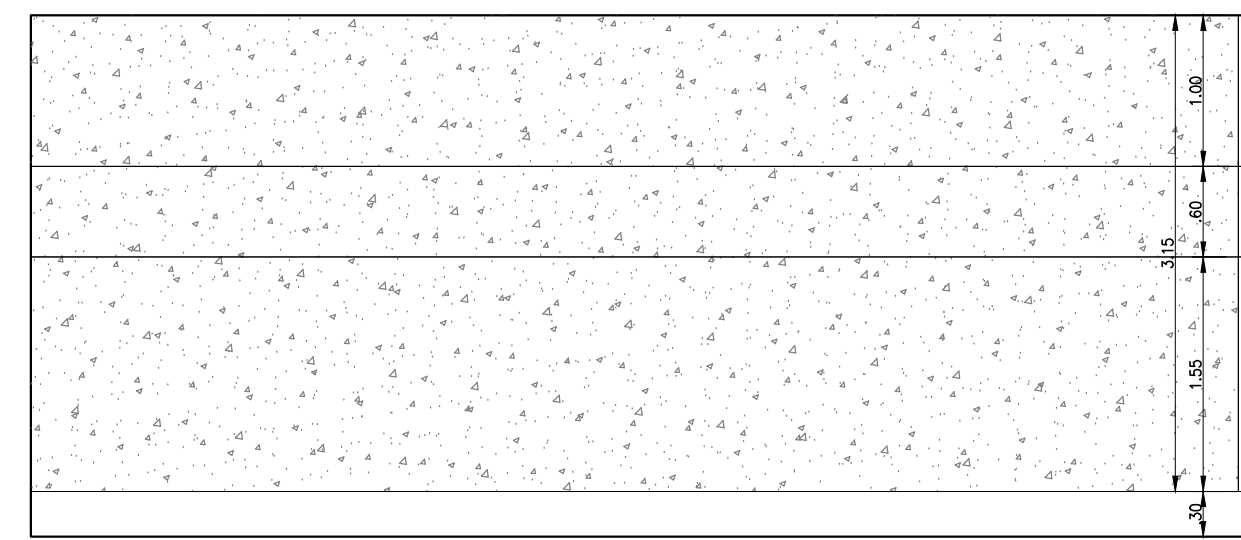


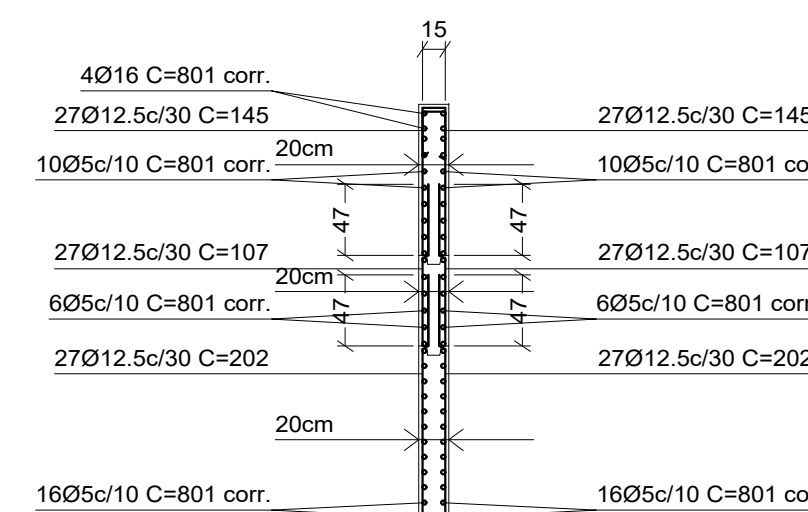
C3: Pisos 1 a 3



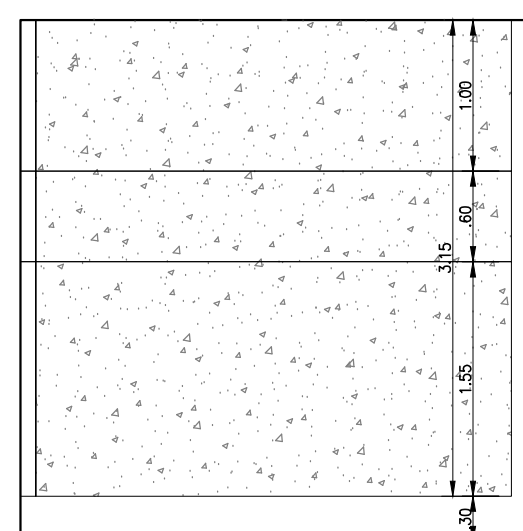
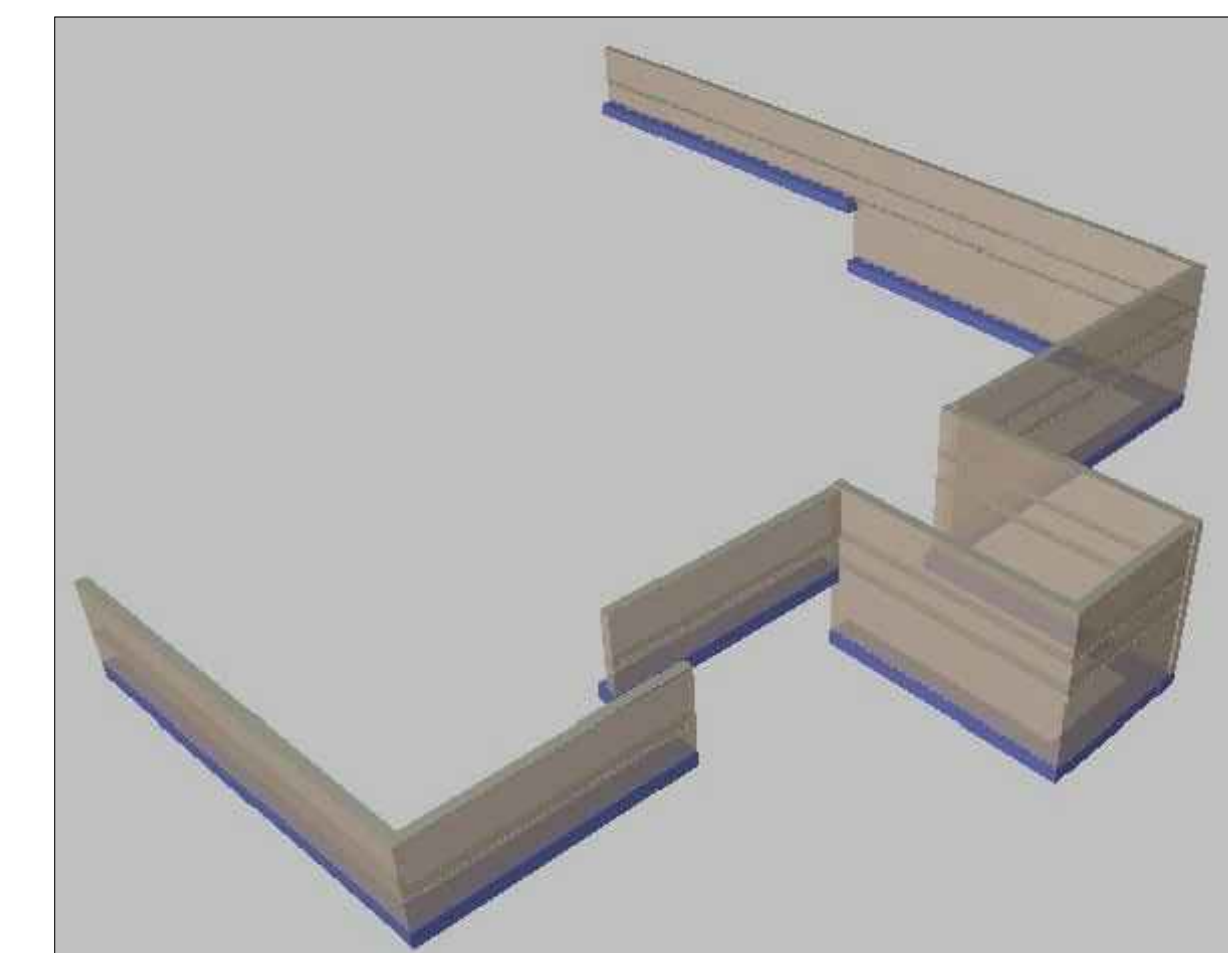
Ver detalhamento sapatas



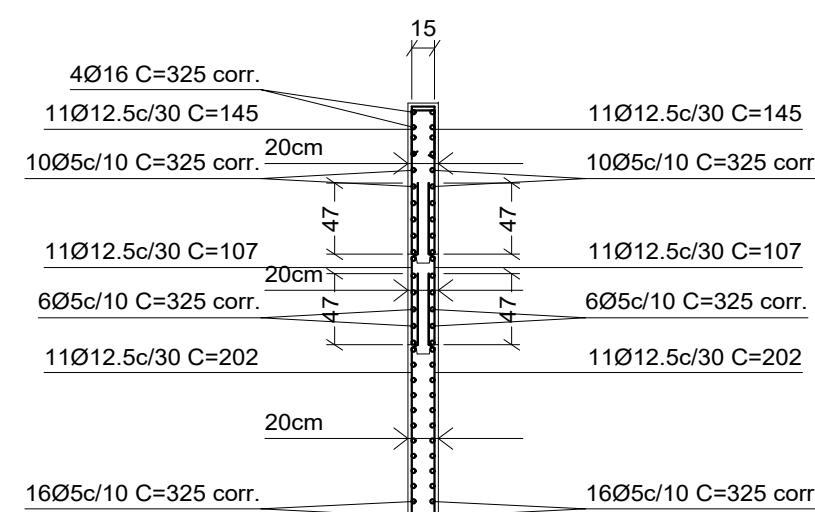
C4: Pisos 1 a 3



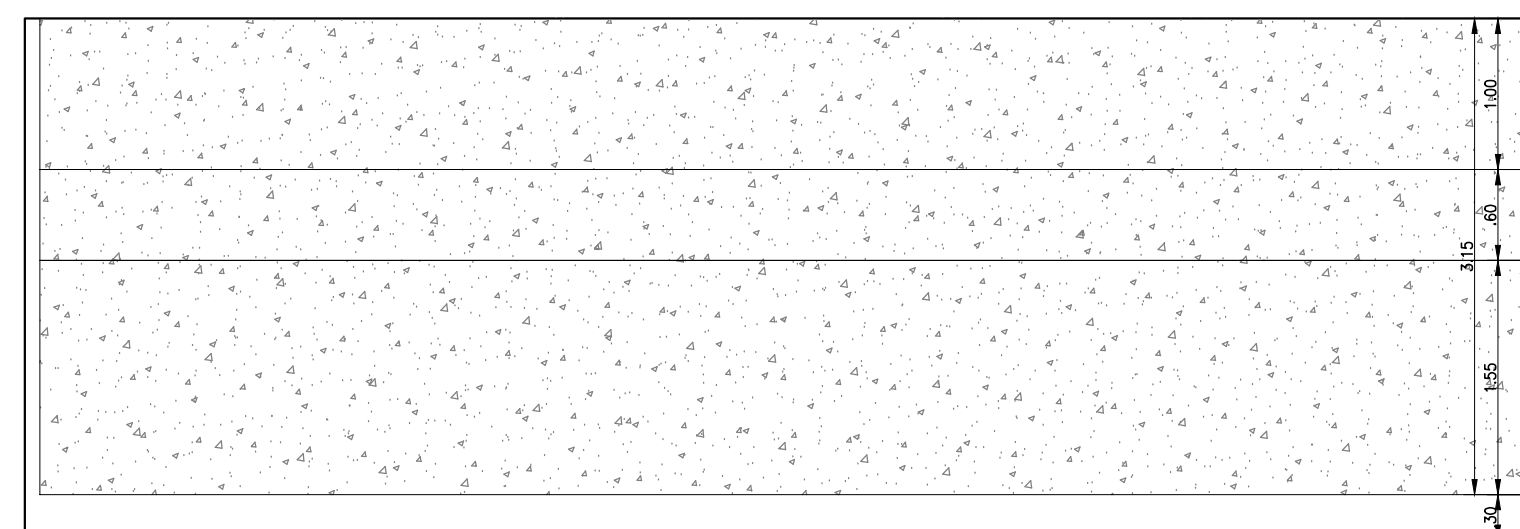
Ver detalhamento sapatas



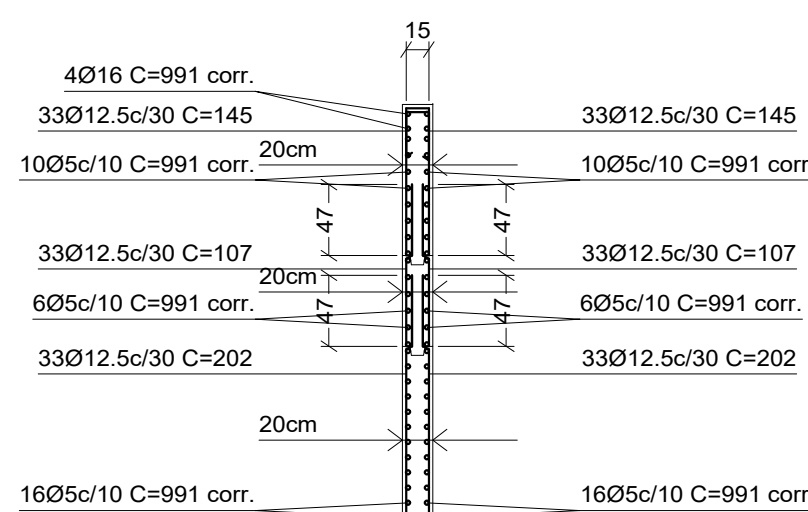
C2: Pisos 1 a 3



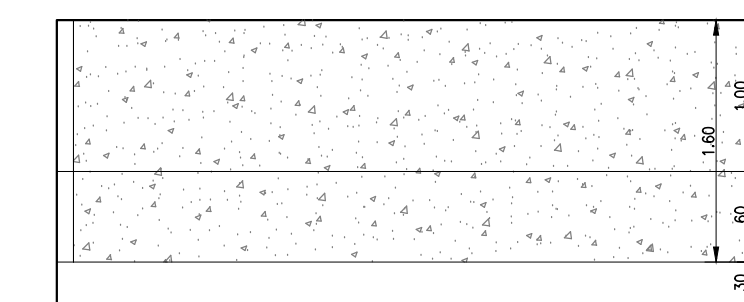
Ver detalhamento sapatas



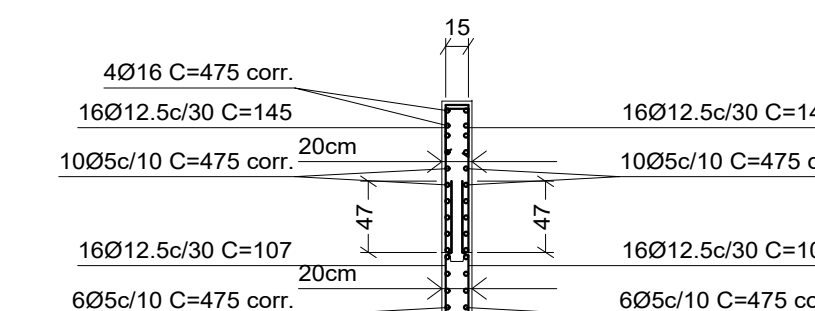
C5: Pisos 1 a 3



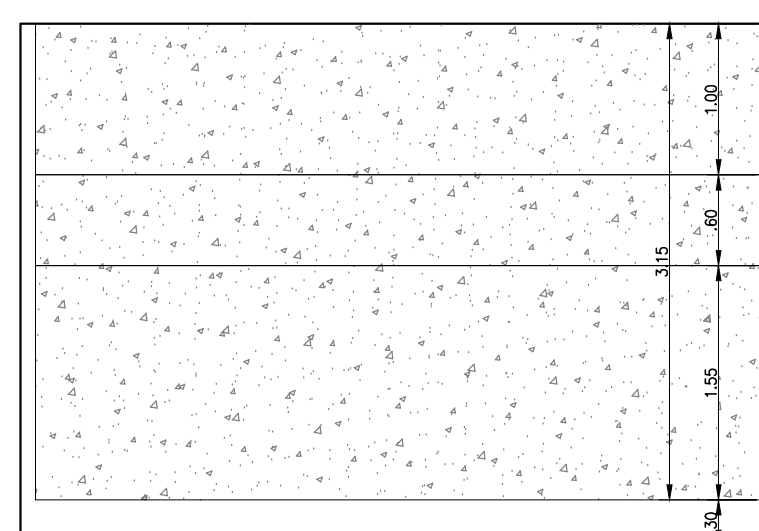
Ver detalhamento sapatas



C7: Pisos 2 a 3

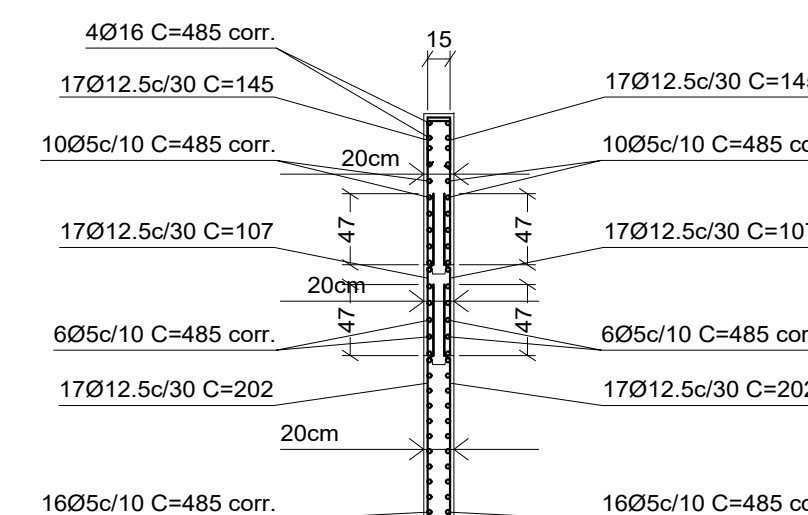


Ver detalhamento sapatas

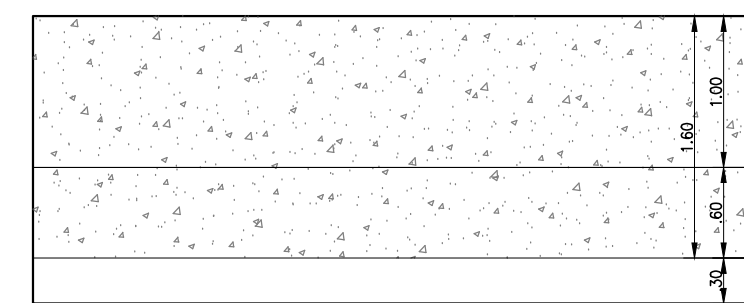


C1: Pisos 1 a 3

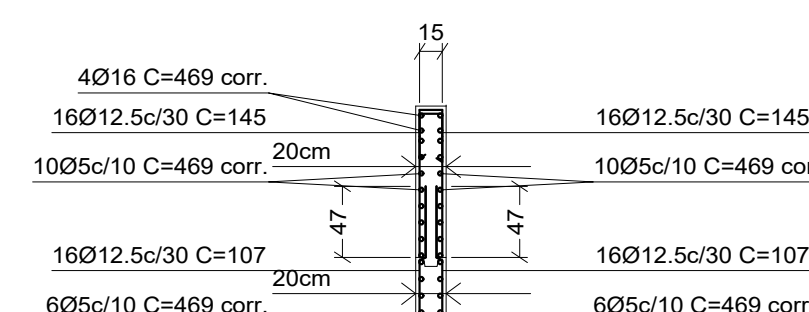
C1: Pisos 1 a 3



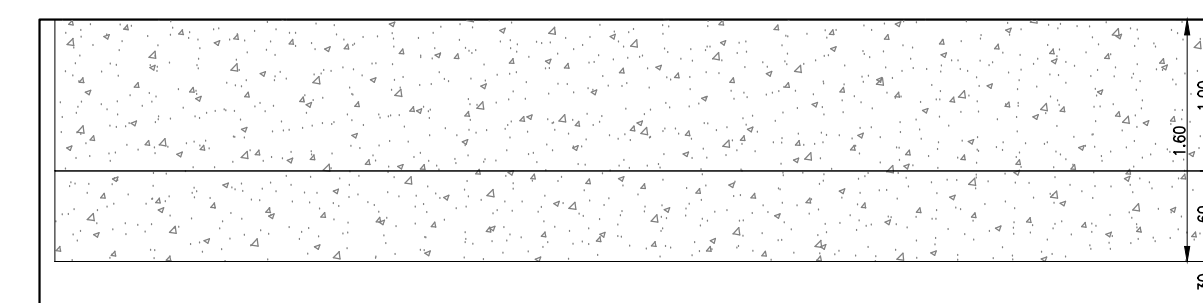
Ver detalhamento sapatas



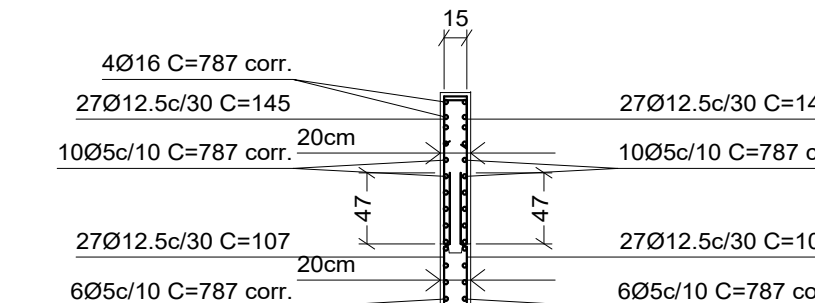
C6: Pisos 2 a 3



Ver detalhamento sapatas



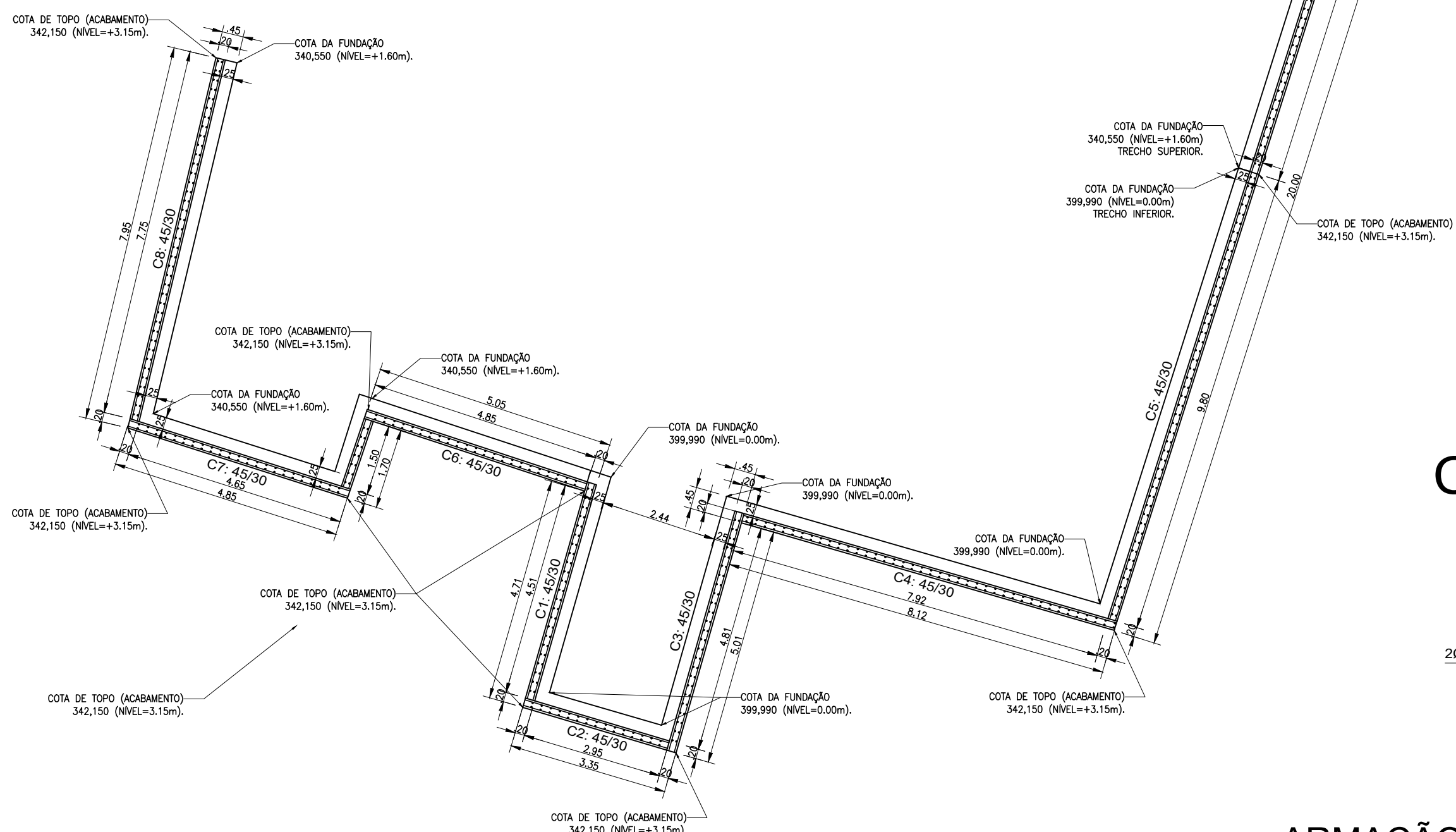
C8: Pisos 2 a 3



Ver detalhamento sapatas

ARMAÇÃO DOS MUROS

ESCALA: 1/50

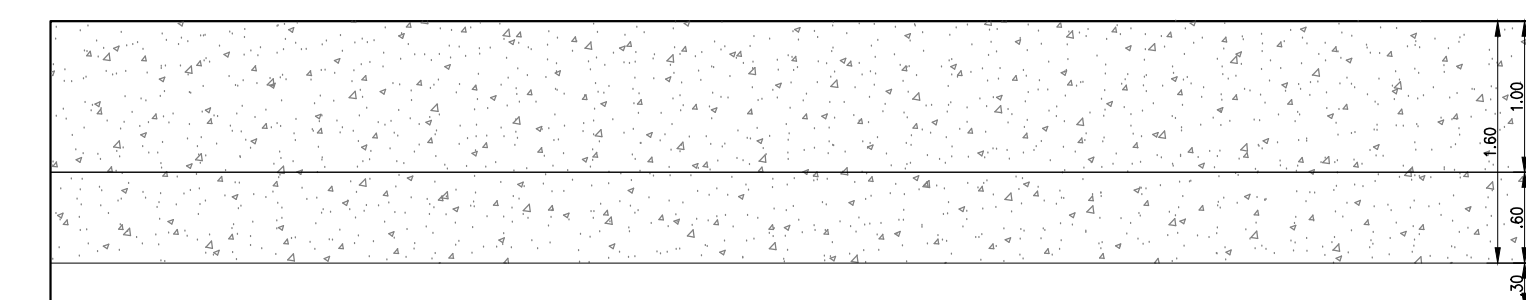


FORMA DA FUNDAÇÃO - Muro de Contenção (Recreio Coberto e Quadra)

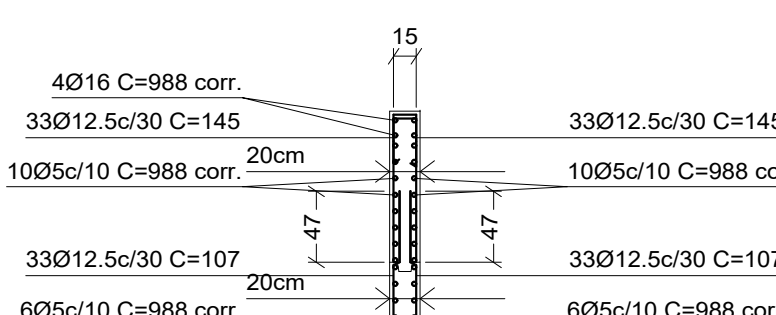
ESCALA: 1/100

ARMAÇÃO DAS SAPATAS - Muro de Contenção (Recreio Coberto e Quadra)

ESCALA: 1/100

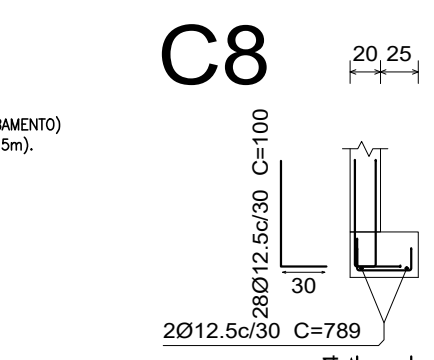


C9: Pisos 2 a 3

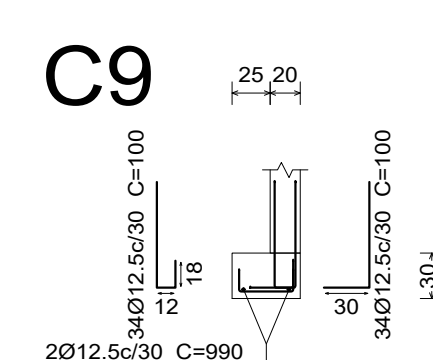


Ver detalhamento sapatas

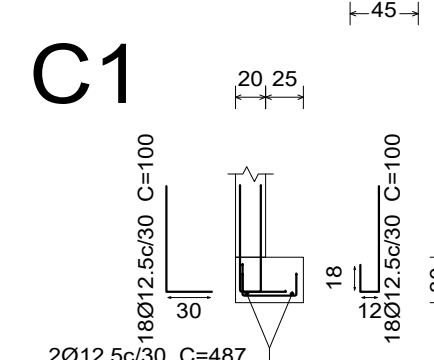
Resumo Aço	Muros de concreto armado	Comp. total (m)	Peso+10% (kg)	Total
CA-50	Ø12.5	1426.2	1511	
CA-60	Ø16	233.4	405	1916
CA-60	Ø5	2865.0	495	495
Total				2411



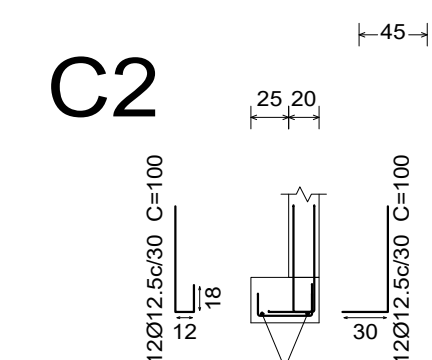
C8



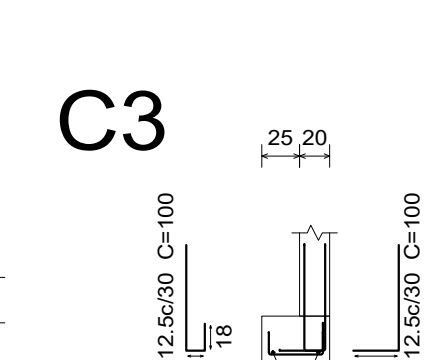
C9



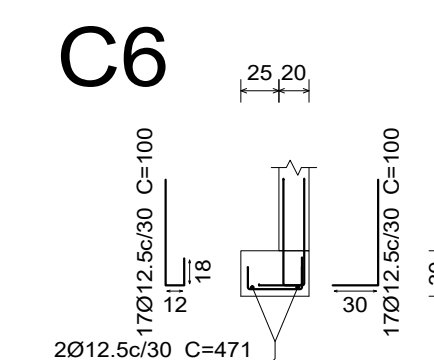
C1



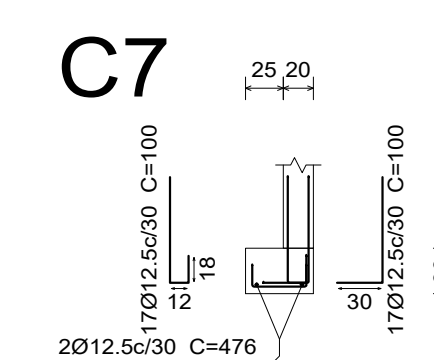
C2



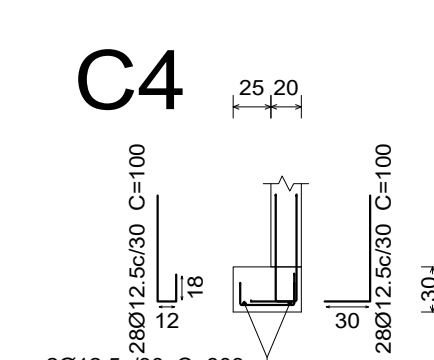
C3



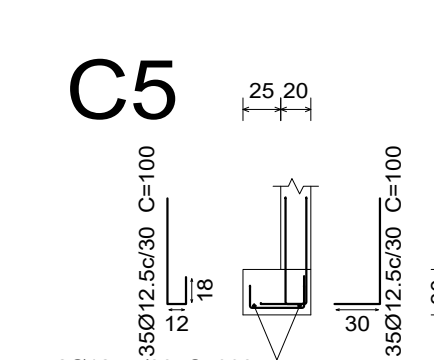
C6



C7



C4



C5

DESCRIÇÃO:

Projeto da estrutura de concreto armado para construção de uma escola localizada no bairro Fazenda Velha, no município de Toritama - PE.

CLEYTON DA SILVA ENGENHARIA - EIRELI
CNPJ: 27.928.441/0001-04
CREA 598860 - PE

Cleyton da Silva
Engenheiro Civil
CREA 12814477 D/PE

Município de Toritama
C.N.P.J.11.245.054/0001-39

NATUREZA:
Projeto estrutural de concreto armado.
PROPRIETÁRIO:
Município de Toritama
C.N.P.J.11.245.054/0001-39

DESENHOS:
- Forma da fundação (MURO DE CONTENÇÃO)
- Armação das ferragens

ÁREAS GERAIS:
Área do terreno = 1.798,69m²
Área de solo natural = 162,58m² 9%
Área de solo permeável = 107,76m² 6%
Área de solo impermeável = 1.501,45m² 83,5%
Área construída = 1.334,25m² 74,2%



ESCALA: 1/75 e 1/25

DATA: Dezembro de 2020

PRANCHA:

04/05